



# VERMONT AGRICULTURE & ENVIRONMENTAL LABORATORY

LEGISLATIVE  
PRESENTATION  
2016 LEGISLATIVE SESSION

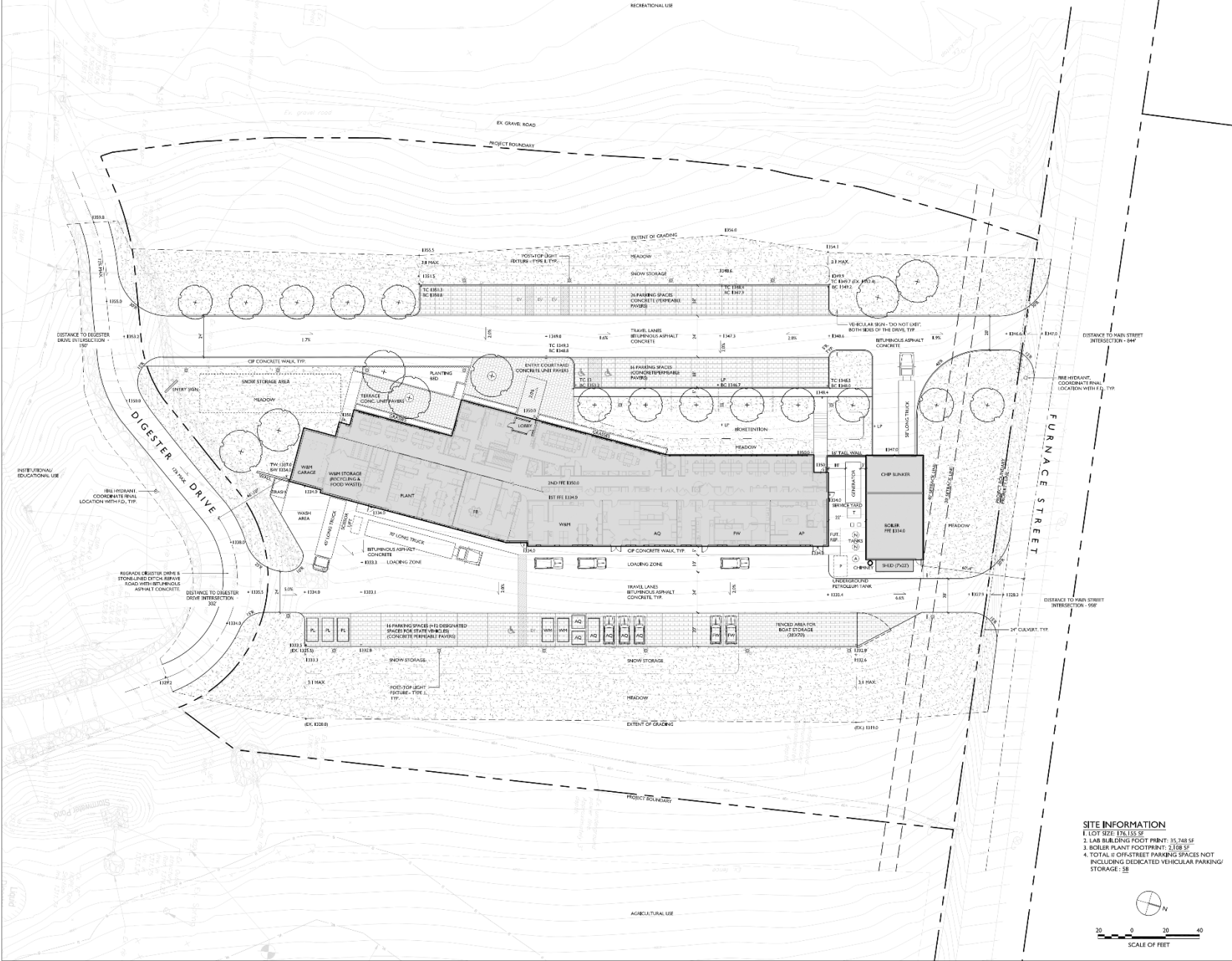






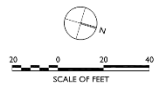
**Site Location: North edge of VTC's campus**



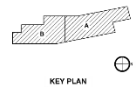


**SITE INFORMATION**

1. LOT SIZE: 176,135 SF
2. LAND BUILDING FOOT PRINT: 35,748 SF
3. BOILER PLANT FOOTPRINT: 2,108 SF
4. TOTAL 0-CHRISTREET PARKING SPACES NOT INCLUDING DEDICATED VEHICULAR PARKING/STORAGE: 58



1. Site Plan  
2. Site Plan  
3. Site Plan  
4. Site Plan

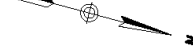
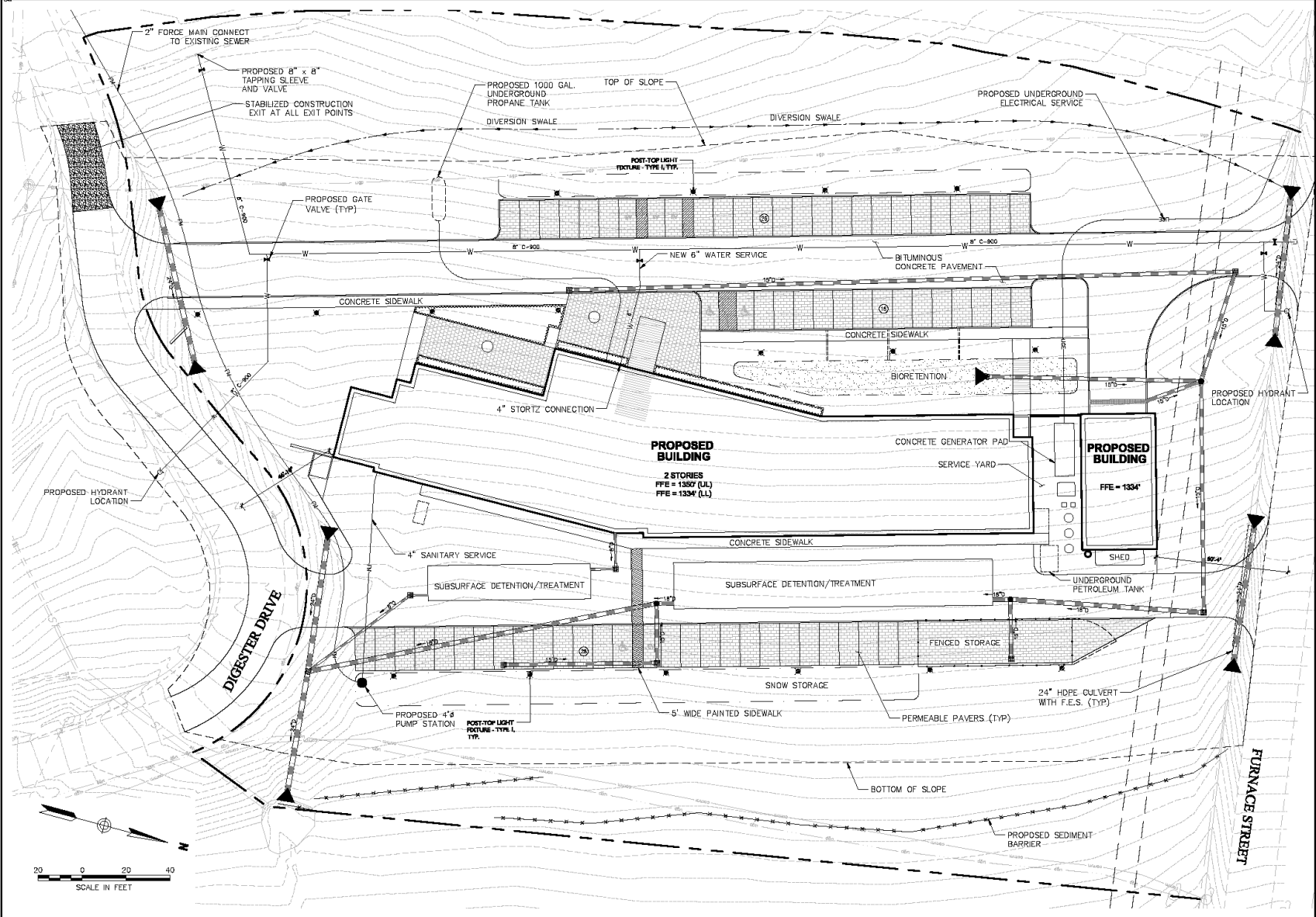


**SITE PLAN**

Scale: AS NOTED Issue Date: 02/09/2016  
Project No: 09401-000 Checked by: JH

**L001**

**Site Plan**



STATE OF VERMONT  
AGENCIES OF AGRICULTURE  
AND NATURAL RESOURCES  
COLLABORATIVE  
LABORATORY

CANNONDESIGN



CONSULTANTS  
ARCHITECTS/ENGINEERS/PLANNERS  
100 Cambridge Street, Suite 402  
Burlington, VT 05401

STATE OF VERMONT  
BUREAU OF VERMONT  
BUILDINGS & GENERAL SERVICES  
100 State Street, Room 300  
Burlington, VT 05401

FREEMAN FRENCH FREEMAN  
ENGINEERS  
51 Main Street  
Burlington, VT 05401

PROBART CONSULTING ENGINEERS  
LANDSCAPE ARCHITECTS  
51 Maple Lane  
Winooski, VT 05405

HOME ENGINEERS  
CONSULTANTS  
103 Langdon Circle, Suite 203  
Burlington, VT 05401

WAMBER HODGSON  
ARCHITECTS  
100 State Street  
Burlington, VT 05401

VERMONT STATE COLLEGE  
100 State Street  
Burlington, VT 05401

VERMONT STATE COLLEGE  
100 State Street  
Burlington, VT 05401

VERMONT STATE COLLEGE  
100 State Street  
Burlington, VT 05401

VERMONT STATE COLLEGE  
100 State Street  
Burlington, VT 05401

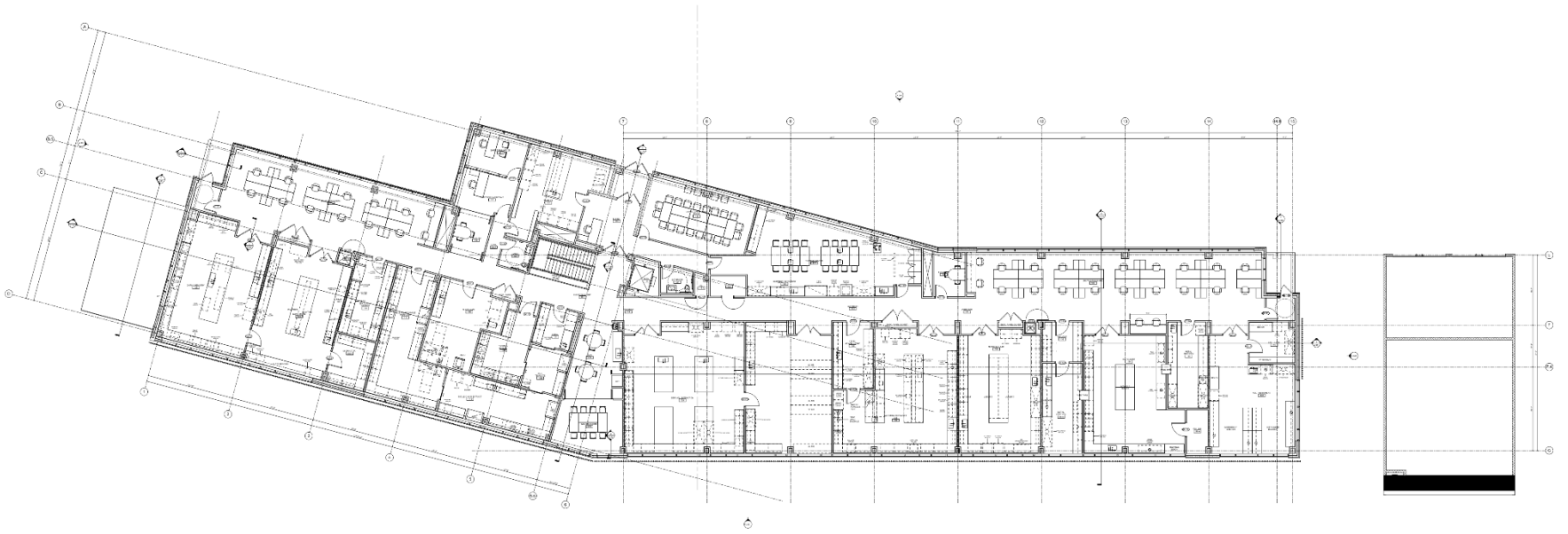
1. Schematic Design 02 FEBRUARY 2016  
No. Description Date

Drawing Title:  
**PROPOSED UTILITY  
AND EROSION  
CONTROL PLAN**

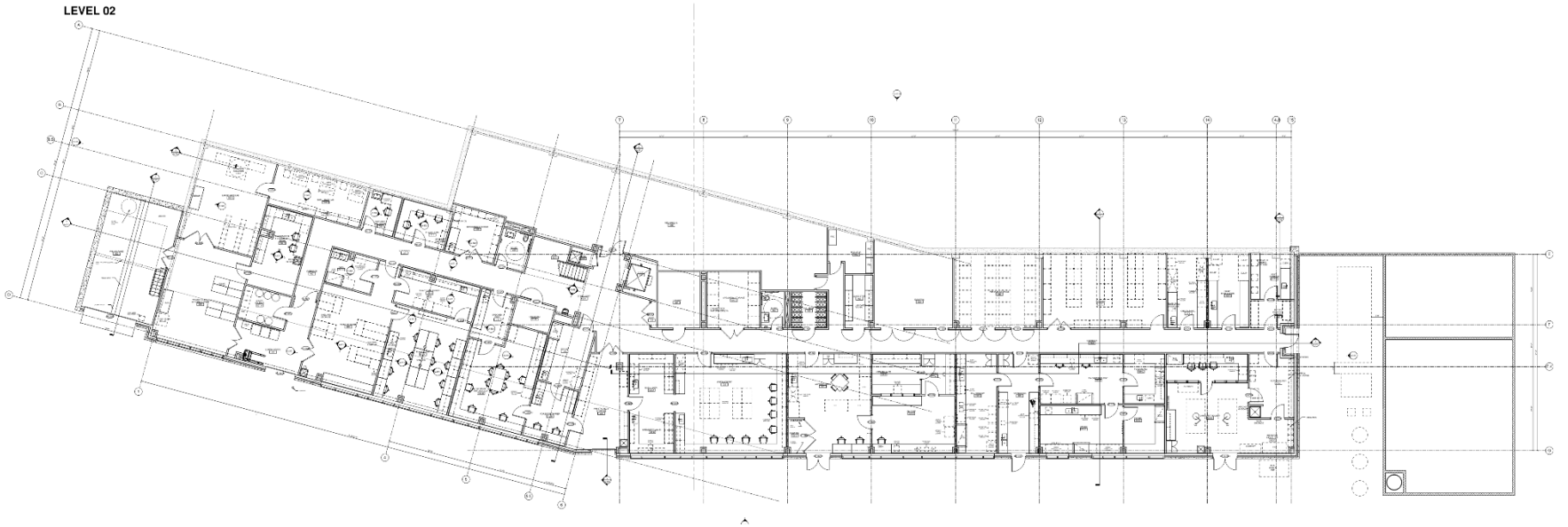
Title: 17-01  
Sheet No: 0050001

Project No: 1716.00 Checked by: PBD

C-04



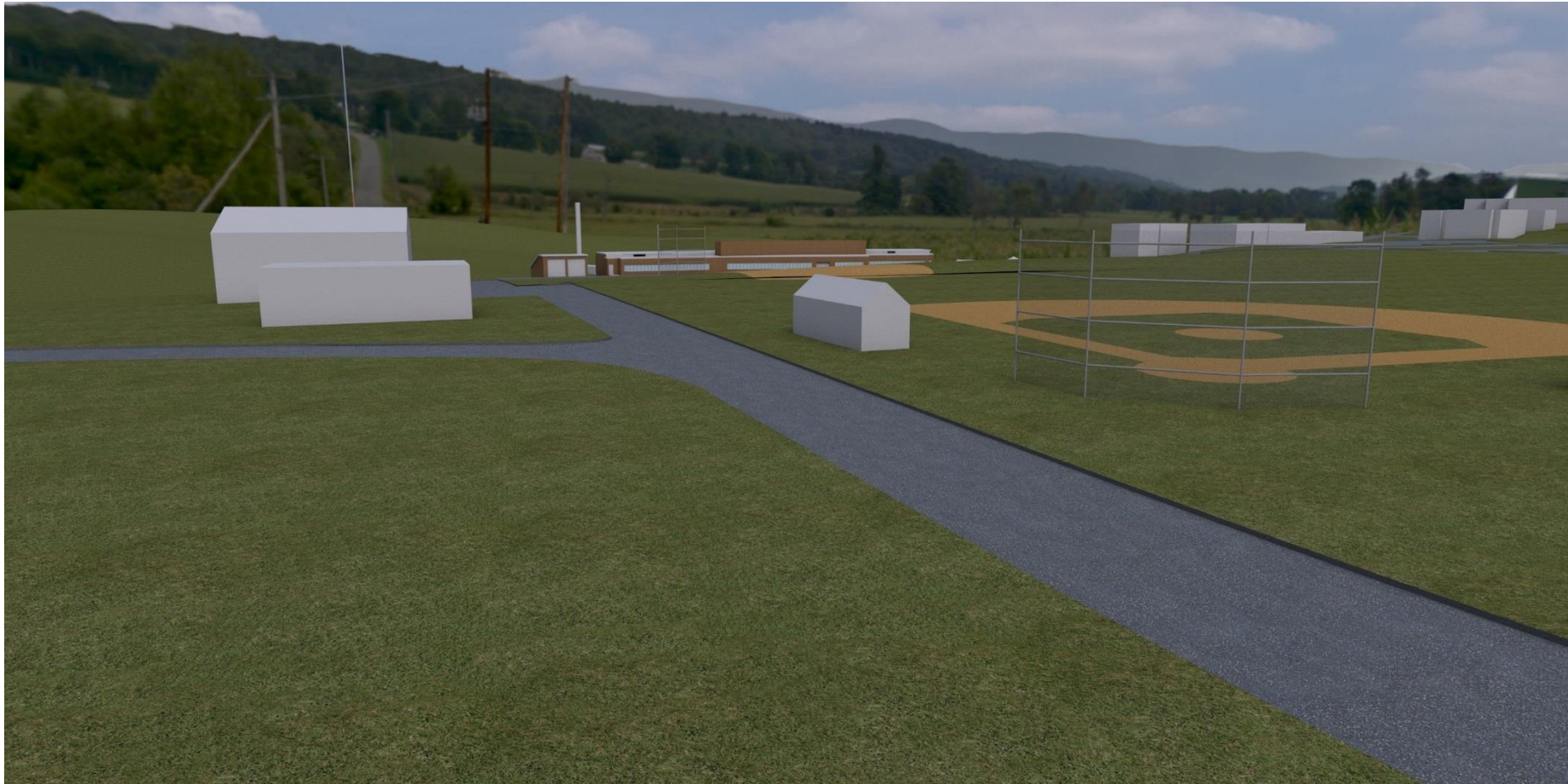
LEVEL 02







**View From Baseball Field**



**View From Neighbor's Back Porch**





**View From Back Of Floyd's Store**



## VERMONT AGRICULTURE AND ENVIRONMENTAL LABORATORY – RANDOLPH, VT

Tropical Storm Irene destroyed the Agencies of Agriculture and Natural Resources laboratory located in the Waterbury State Office Complex. FY'14 funds were authorized to provide for a feasibility study to determine the best approach to replace the services provided by these agencies. The results of the study provided for planning for a Collaborative Laboratory facility. FY'15 funds provided for preliminary programming, site evaluation, and site selection with agreement by the Institutions Committees as well as approval from the Joint Fiscal Committee. This was accomplished in August and September of 2014 with the approval to locate the facility on the Vermont Technical College campus in Randolph, VT. FY'16 funds were approved to complete design and bidding. FY'17 funds were approved to proceed with the start of construction. We are currently seeking the Federal, State, and Local permits for the project. We are also in the middle of the design development phase and hope to proceed to the site and foundation construction beginning in July 2016, with bidding of the balance of construction during September 2016. This will allow us to proceed with the second phase of construction in November 2016 with occupancy planned for March 2018 and full operation by the Lab's busy season during the summer of 2018.

This year's Capital Budget Adjustment FY'16 & FY'17 requests authority to proceed with phased construction by entering into contractual obligations for completion of the Vermont Agriculture & Environmental Laboratory in Randolph, VT. The intent is that more funds will be appropriated in future acts relating to capital construction and state bonding.

Summary Cost Allocation:	Approved Through FY '14	Current Year FY '15	Budget Year FY '16	Budget Year FY '17	Future Requirements			Totals
					FY '18	FY '19	FY '20-FY '26	
Planning & Design, Outside Consultants	100	300	2,500	1,500				4,400
Site Acquisition								0
Construction				12,548	7,452			20,000
Fit-Up					1,200			1,200
Total Appropriation for Fiscal Year(s)	100	300	2,500	14,048	8,652 <sup>1</sup>	0	0	25,600

<sup>1</sup> This funding is inclusive of \$1,607,110 of FEMA Flood Mitigation Funds thereby reducing the anticipated FY'18 Capital Bill needs to \$7,044,716.